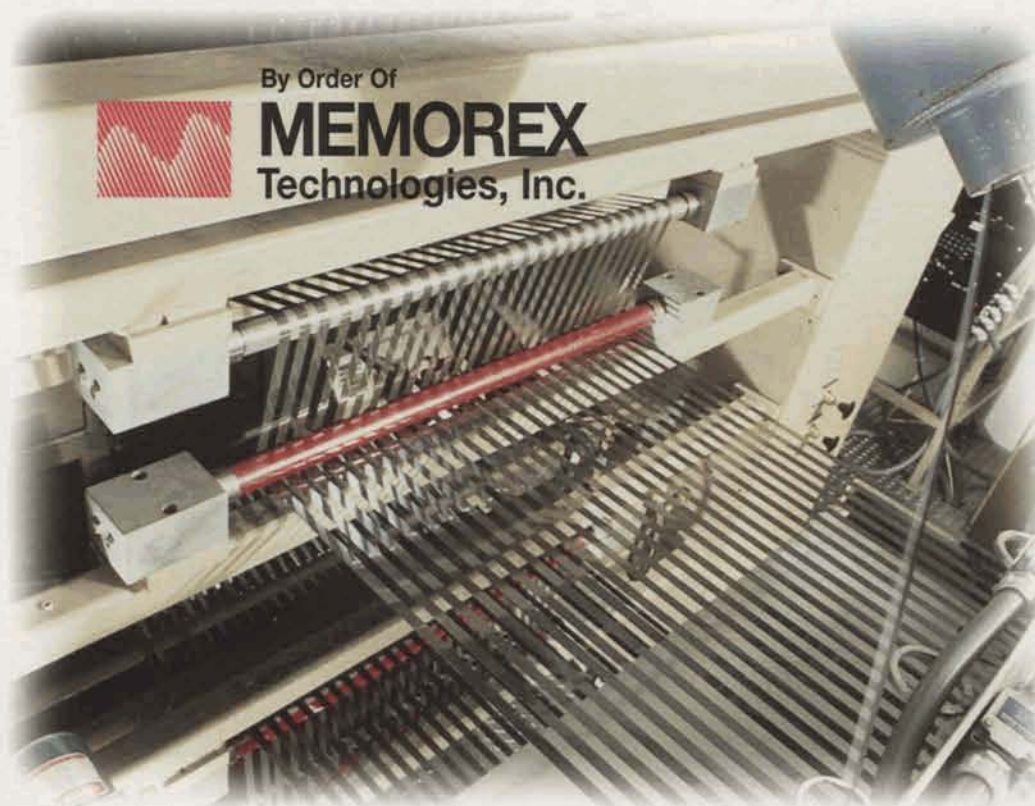


A ROSS-DOVE COMPANY AUCTION



By Order Of



MEMOREX
Technologies, Inc.

COMPLETE LIQUIDATION OF A MAJOR COMPUTER TAPE MANUFACTURING FACILITY
ASSETS SURPLUS TO CONTINUING OPERATIONS

TUESDAY, FEBRUARY 8, 1994
SANTA CLARA, CALIFORNIA

ROSS-DOVE
AUCTIONEERS SINCE 1917
COMPANY, INC.



TAPE MANUFACTURING

THE AUCTION

TUESDAY, FEBRUARY 8, 1994
10 AM

THE PREVIEW

MONDAY, FEBRUARY 7, 1994
9 AM - 5 PM

THE LOCATION

1200 MEMOREX DRIVE
SANTA CLARA, CALIFORNIA

AUCTIONEER'S NOTE

WE ARE PLEASED TO HAVE BEEN SELECTED BY MEMOREX TECHNOLOGIES, INC. TO CONDUCT THIS AUCTION OF A COMPLETE, MAJOR COMPUTER TAPE MANUFACTURING FACILITY THAT HAS BECOME SURPLUS TO MEMOREX'S CONTINUING OPERATIONS. THIS AUCTION INCLUDES COMPLETE TAPE MANUFACTURING EQUIPMENT, LARGE QUANTITIES OF OFFICE FURNITURE FROM MAJOR MANUFACTURERS, A SIGNIFICANT MACHINE SHOP, VERY LARGE QUANTITIES OF LABORATORY TEST AND ELECTRONIC TEST INSTRUMENTATION, SURFACE INSPECTION, FACILITY EQUIPMENT AND MUCH MORE. PLEASE PLAN ON ATTENDING THE PREVIEW.


SUGGESTED LODGING

SANTA CLARA MARRIOTT - 408-988-1500
BILTMORE - 408-988-8411
WESTIN HOTEL - 408-986-0700

DRIVING DIRECTIONS

FROM HIGHWAY 101 NORTH OR SOUTH, EXIT AT DE LA CRUZ BLVD. TAKE DE LA CRUZ WEST TO THE FIRST INTERSECTION, CENTRAL EXPY. TAKE CENTRAL EXPY NORTH TO THE FIRST INTERSECTION, LAFAYETTE. TURN LEFT ON LAFAYETTE, GO 8/10TH MILE TO MEMOREX DRIVE. TURN RIGHT AND FOLLOW THE SIGNS TO 1200 MEMOREX DRIVE.

SPECIAL AIRFARES

 UNITED AIRLINES IN CONJUNCTION WITH ROSS-DOVE CO., INC. WILL OFFER 'DISCOUNTED' AIRFARES TO ALL ROSS-DOVE CO. AUCTION ATTENDEES. CONTACT PREMIER TRAVEL AT 1-800-877-6115 TO MAKE RESERVATIONS AND REFER TO THIS AUCTION FOR YOUR 'DISCOUNT'. MILEAGE PLUS MEMBERS WILL RECEIVE FULL CREDIT.

A 5% BUYER'S PREMIUM
WILL APPLY AT THIS SALE

NO MINIMUMS!
NO RESERVES!



PERKINS, MRD, AND PASSAVANT MULTIPLE ROLL VERTICAL (4) AND HORIZONTAL (1) CALENDARS. OVER 70 COMPLIANT AND CHROMED STEEL SPARE ROLLS AVAILABLE



THREE DUSENBURY SLITTING MACHINES FOR CUTTING 26" WEBS, UP TO 40K FEET, THICKNESS 0.25 MIL TO 1.5 MIL

ALSO AVAILABLE

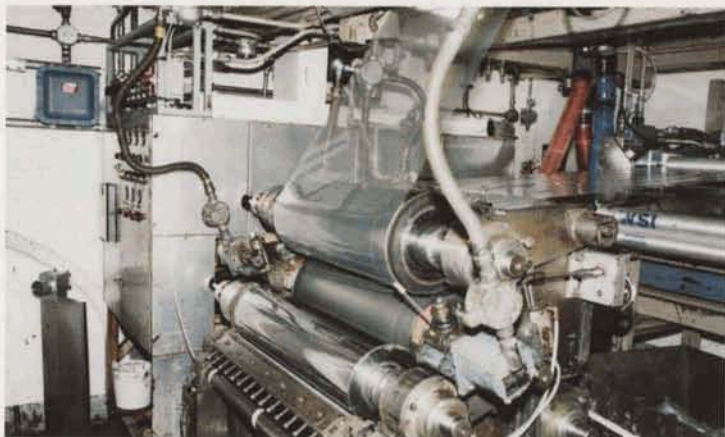
- TANKAGE: 28 STAINLESS TANKS, FIXED WITH WATER JACKETS, MOST WITH AGITATION, 540-1200 GALLONS.
- TANKAGE: 20 EACH 170 GALLON PORTABLE STAINLESS WITH WATER JACKETS AND BOTTOM OUTLETS
- HUNDREDS OF HORN CARTS
- TWO COPAL CARTRIDGE LOADERS



OVER 80 HALF-INCH RECORTREC TAPE EVALUATORS, MODELS CTE-506, CTE-503, CTE-501



OVER 30 CARTRIDGE TESTERS INCLUDING IBM 3840, FUJITSU 5480 AND 5481; OVER 20 CTC-1 SINGLE AND DUAL CERTIFIERS



FOUR 26" REVERSE ROLL COATING LINES (200-600 FPM) WITH UNWIND AND TAKEUP STANDS, WEB CLEANERS, WATER COOLED ELECTROMAGNETIC FIELD ORIENTING COILS. "LFE PROFITMASTER MODEL 5001" THICKNESS MEASUREMENT SYSTEMS ON 3 LINES



OVER 20 DRAIS, PREMIER AND MOREHOUSE VERTICAL AND HORIZONTAL SAND AND BEAD MILLS



CASE SEALER

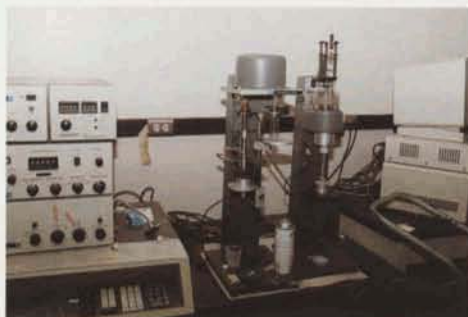


SHRINK WRAP DISPENSER AND OVEN

OF SPECIAL INTEREST

COMPLETE PILOT PLANT EQUIPMENT INCLUDING 13" DUSENBURY SLITTER

CHEMICAL LAB



PERKIN ELMER THERMAL ANALYSIS SYSTEM



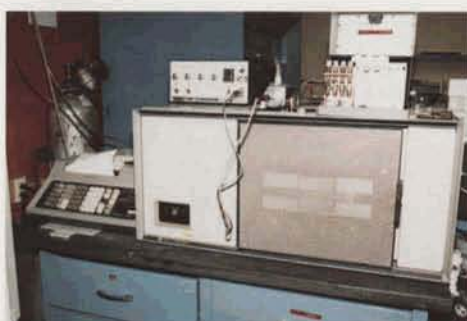
H-P 8451A DIODE ARRAY SPECTROPHOTOMETER



H-P 5880A GAS CHROMATOGRAPH



WATER ASSOCIATES LIQUID CHROMATOGRAPH



H-P 5830A GAS CHROMATOGRAPH



H-P 5890A GAS CHROMATOGRAPH



NICOLET MX-1 IR SPECTROMETER



NICOLET FTIR SPECTROMETER



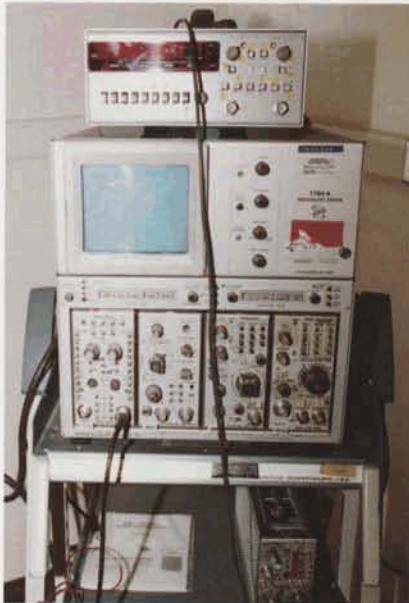
NUMEROUS BLUE M, DESPATCH, GALLEN KAMP AND BEMCO OVENS

NO MINIMUMS!
NO RESERVES!



IMASS VISCOELASTOMETER

TEST & MEASUREMENT INSTRUMENTATION



TEK 7704 A OSCILLOSCOPE WITH PLUGINS



ANRITSU MS 420J NETWORK/SPECTRUM ANALYZER



ASSORTED TEST EQUIPMENT



TEK 7854 OSCILLOSCOPE WITH PLUGINS



TEK 7704A OSCILLOSCOPE WITH PLUGINS



TEK 465B OSCILLOSCOPE

ALSO AVAILABLE

VERY LARGE INVENTORY OF TEST AND MEASUREMENT INSTRUMENTATION FROM TEK, H-P, ANRITSU, WAVETEK, FLUKE, AND MORE

SURFACE INSPECTION



ZYGO MICROMETER



KOSAKA LABS SURFACE PICTURE ANALYZER



2 SCANNING ELECTRON MICROSCOPES FROM SEIMENS AND AMR



OPTICAL COMPARATORS FROM NIKON AND JONES & LAMSON



OPTICAL MICROSCOPES BY ZEISS, B & L, OLYMPUS, LEITZ, MITUTOYO, WILD AND AMERICAN OPTICAL



2 INSTRON TESTERS

MACHINE TOOLS



MIRAC MR-24-200 SP107 (1991) ROLL GRINDER, 24" DIAMETER



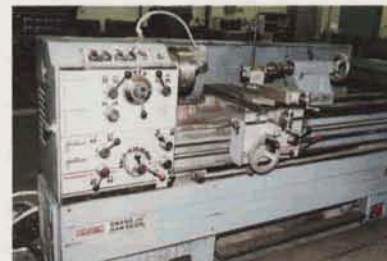
TUDA SEISAKUSHO CNC LATHE w/DRO, JUMBO TYPE,
S/N H80007



LEHMAN LATHE w/GEM VERTICAL GRINDER/POLISHER,
D.P.C.-809-CC792



BROWN & SHARPE GRINDER, 8" DIAMETER, MODEL 13,
S/N 525-13-1571



NAMSEON LATHE, ACCA-TURN 18 X 40, 11" DIAMETER,
S/N 10-8703-003



LANDIS/INDUSTRIAL TOOLS INC CARBIDE BLADE GRINDING
SYSTEM, IIT CNC CONTROLLER w/VIDEO INSPECTION
SYSTEM, TYPE ZR, S/N 870-68



JOHNSON BAND SAW



DRILL PRESSES FROM POWERMATIC,
ROCKWELL, ORBIT AND DAYTON



BAND SAWS BY POWERMATIC,
JOHNSON AND JET



HARIG GRINDER



CINCINNATI TOOL GRINDER



TWO BRIDGEPORT MILLS,
S/N'S 118084, 140466



WELLS INDEX MILL, 47" X 9" TABLE,
MODEL 747, S/N 18840



HARDINGE LATHE w/6" X 18" ELECTROMAGNETIC CHUCK,
Y=20", X=8", Z=8 1/2", MODEL 618, S/N 5310

FURNITURE



CONFERENCE ROOMS



RECEPTION SEATING



MODULAR WORKSTATIONS



AUDIO/VISUAL EQUIPMENT



EXECUTIVE OFFICE FURNISHINGS



FLAT FILES



LARGE QUANTITIES OF DESKS, CHAIRS, CREDENZAS, BOOKCASES



LARGE QUANTITIES OF VERTICLE AND LATERAL FILES



FAX MACHINES



KODAK COPIER



EMPLOYEE LOCKERS



CAFETERIA FURNITURE AND MICROWAVES

FACILITY EQUIPMENT



ELECTRIC AND PROPANE LIFT TRUCKS AND POWER PALLET JACKS FROM BIG JOE, HYSTER, CLARK, TOYOTA, RAYMOND, AND CATERPILLAR - OVER 20



FLAMMABLE STORAGE



ORION M-67 PALLET FILM WRAPPING MACHINE.



LARGE QUANTITIES OF METRO CARTS AND HUNDREDS OF HORN CARTS



INDUSTRIAL CLEAN ROOM WASHERS AND DRYERS



330 Hatch Drive
Foster City, California 94404
(415) 571-7400 • Fax: (415) 572-1502



First Class Mail
US Postage
PAID
Minneapolis, MN
Permit #3723

FIRST CLASS MAIL

MILLARD, ROSS & KIRK DOVE, Principals
Bond #: 5S100840021-BCA



LUTVAK ASSOCIATES
MARK LUTVAK
1364 BOX CANYON ROAD
SAN JOSE CA 95120

Asset Conversion Consultants & Appraisers To Corporate America

AUCTION TERMS AND CONDITIONS

1. All announcements made on auction day shall take precedence over previously distributed information.
2. Any deletions and additions to the catalog quantities will be announced by the auctioneer at the time of the auction sale. All bidders are advised to inspect each item prior to the auction.
3. Only cash, Cashiers Check, Certified Check, Traveler's Check or wire transfer made payable to ROSS-DOVE COMPANY, INC. will be accepted. A company check must be accompanied by a letter from your bank guaranteeing its payment in full. A 25% deposit is required upon successful bid from all Buyers. Balance and full payment is due prior to the removal of any merchandise. Some items may be subject to prior sale.
4. Applicable sales tax will be added to the purchase price of all taxable auction items. Dealers who purchase for resale must file their resale permit numbers in order to avoid paying the area's sales tax.
5. If products carry a manufacturer's warranty, the auctioneers will announce this at the time of sale.
6. While descriptions are believed to be accurate, the auctioneer and seller make no warranties or guarantees, expressed or implied, as to the genuineness, authenticity of, or defect in any item(s) being auctioned and will not be held responsible for any advertising discrepancies or inaccuracies. Everything is sold "AS IS" and "WHERE IS," except as expressly made in writing. No warranties are made as to the merchantability of any item(s) being auctioned or their fitness for any particular purpose.
7. It is the buyer's responsibility to secure all safety equipment to meet all applicable government safety standards in using or removing the items purchased. Certain pieces of this equipment may contain residual chemicals. The purchasers hereby indemnify and hold harmless the auctioneers and seller from any and all damages, claims or liabilities from any injuries to persons or property of any type whatsoever caused during the sale or during the removal of the items purchased.
8. If any shortages exist on estimated counts, an adjustment will be made only if claims are made at the time of removal. No adjustment will be allowed after purchased item(s) are removed from the premises. The seller and auctioneer have no liability to the buyer due to the nondelivery of any purchased item(s).
9. Under no circumstances can the auction item(s) be removed during the time the auction is being conducted. The removal (check-out) period will be announced at the time of auction.
10. Any material handling equipment being sold at the auction will be used in the removal of auction item(s) during the removal (check-out) period. Purchasers acknowledge that this equipment will not be picked up until the final day of check-out.
11. The auctioneer reserves the right to group one or more item(s) into one or more selling lots, and to add to and/or delete lots and/or offer any selling lots as operating units prior to offering them individually, by the piece, at auctioneer's sole discretion. The auctioneer reserves the right to reject any bid which is only a fractional advance over the preceding bid. (Where the owner is indebted to or has a monetary guarantee from the auctioneer, the auctioneer or the owner may bid for one or more lots through a representative or agent to protect their interests.)
12. The Auctioneer reserves the right to augment this auction with assets from additional sellers. These assets may be interspersed throughout the sale.
13. Arrangements for the removal and shipment of purchased item(s) will be the sole responsibility of the buyer pursuant to and as part of the contract of sale.
14. In the event the buyer fails to pay the entire purchase price within the time set forth by the auctioneers and/or fails to comply with any of the conditions or terms of the sale, the seller may retain and/or recover the deposit specified as the liquidated damages. The item(s) that are not paid for will then be resold at public or private sale without further notice. The auctioneers will not be responsible for items that are not removed within the time period allowed. If the equipment is not removed within the specified removal period, the item(s) shall be deemed abandoned.
15. This auction is being conducted in accordance with Section 2328 of the Uniform Commercial Code and appropriate penal code sections, as well as any applicable state and local laws.
16. Purchasers will be required to sign an acknowledgment that all items purchased at auction are sold "AS IS, WHERE IS" with no warranties whatsoever.
17. "NOTICE" some items offered for sale at this auction are restricted from shipment, and ultimate destination outside of the United States, by U.S. law. All sales of these "Restricted Technology" items are intended for ultimate destination only within the U.S. and it is the sole responsibility of the buyer to obtain proper licenses, where required, and if allowed, by U.S. Law.
18. A 5% Buyer's Premium fee will be added to each purchase.

SPECIAL PREVIEW NOTICE TO BIDDERS

Ross-Dove Company, Inc. conducts its auctions "theatre" style. We do not walk around as we sell, but rather sit down and bid off a provided catalog. Therefore, all bidders are urged to attend the preview date to view the assets prior to the auction.

Thank You for your Attendance and Patronage... We Hope that you will Enjoy our Auction!